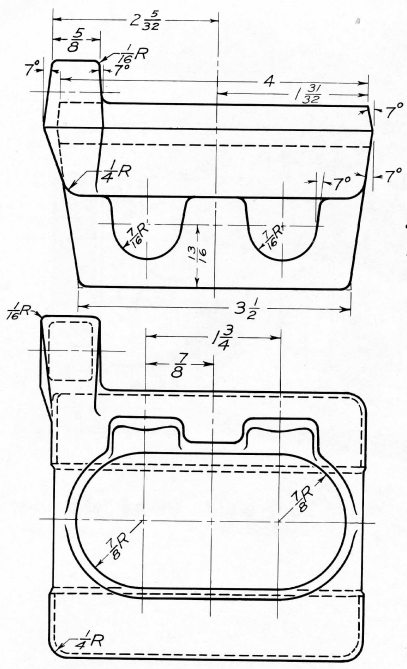


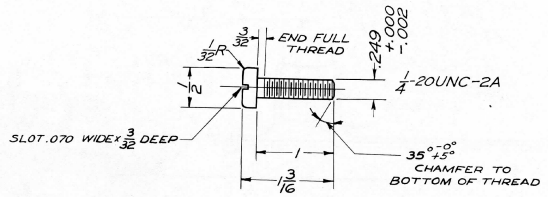
Fig. 14-99 Slide Tool. Make assembly drawing. (See Figs. 14-101 through 14-103.)

TOTAL ON MACH.		NO. PCS.	NAME OF PART	PART NO.	CAST FROM PART NO.	TRACING NO.	MATERIAL	ROUGH WEIGHT PER PC.	DIA.	LENGTH	MILL.	PART USED ON	NO. REQ. FINISH
		1	Body	219-12		D-17417	A-3-S D F						
		1	Slide	219-6		D-19255	A-3-S D F					219-12	
		1	Nut	219-9		E-19256	#10 BZ					219-6	
		1	Gib	219-1001		C-11129	S A E 1020					219-6	
		1	Slide Screw	219-1002		C-11129	A-3-S					219-12	
		1	Dial Bush.	219-1003		C-11129	A-1-S					219-1002	
		1	Dial Nut	219-1004		C-11129	A-1-S					219-1002	
		1	Handle	219-1011		E-18270	(Buy from Cincinnati Ball Crank Co.)					219-1002	
		1	Stop Screw (Short)	219-1012		E-51950	A-1-S					219-6	
		1	Stop Screw (Long)	219-1013		E-51951	A-1-S					219-6	
		1	Binder Shoe	219-1015		E-51952	#5 Brass					219-6	
		1	Handle Screw	219-1016		E-62322	X-1315 C F					219-1011	
		1	Binder Screw	219-1017		E-63927	A-1-S					219-6	
		1	Dial	219-1018		E-39461	A-1-S					219-1002	
		2	Gib Screw	219-1019		E-52777	A-1-S		$\frac{1}{4}$	20	1	219-6	
		1	Binder Screw	280-1010		E-24962	A-1-S					219-1018	
		2	Tool Clamp Screws	683-F-1002		E-19110	D-2-S					219-6	
		1	Fill Hd Cap Scr	1-A			A-1-S		$\frac{3}{8}$	1	$\frac{3}{8}$	219-6 219-9	
		1	Key	No.404 Woodruff								219-1002	

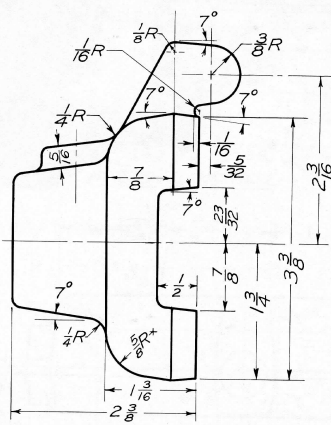
Fig. 14-100 Slide Tool Parts List.



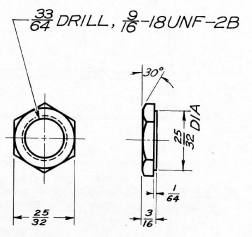
FORGING DETAIL NO. 219-6
A-3 STEEL



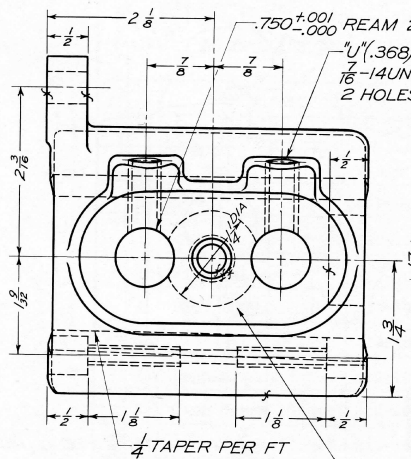
GIB SCREW 219-1019
SAE X 1315 STEEL (COLD FINISHED) - $\frac{1}{2}$ BAR
TREAT P 55Z



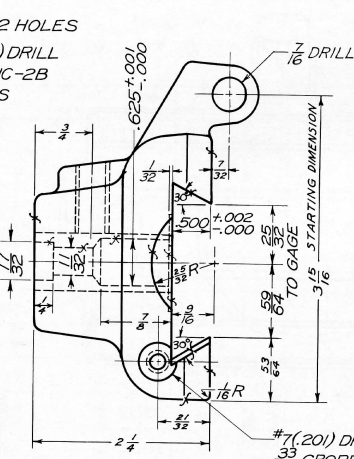
I-BINDER SHOE 219-1015
NO. 5 BRASS - $\frac{1}{4}$ BAR



I-DIAL NUT 219-1004
SAE X 1315 STEEL - COLD FINISHED
 $\frac{3}{8}$ HEX BAR
TREAT - P 55Z

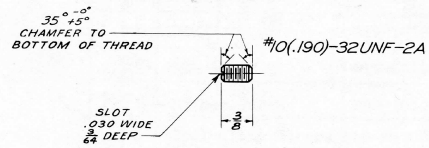


I-SLIDE 219-6
A-3-STEEL DROP FORGING

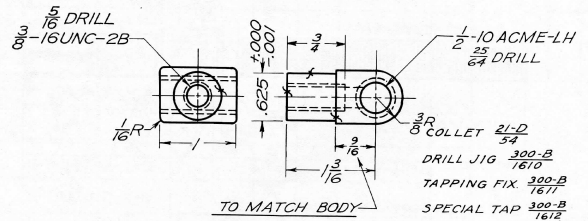


#7(20) DRILL, $\frac{1}{4}$ -20UNC-2B
 $\frac{33}{64}$ CBORE - 2 HOLES

- DRILL JIG 300-B 1608.
- DOVE TAIL GAGE 300-B 3004
- USE GAGE WITH MASTER GIB 300-B 3009



I-HANDLE SCREW 219-1016
SAE X 1315 STEEL - COLD FINISHED - $\frac{3}{8}$ BAR
TREAT P 55Z

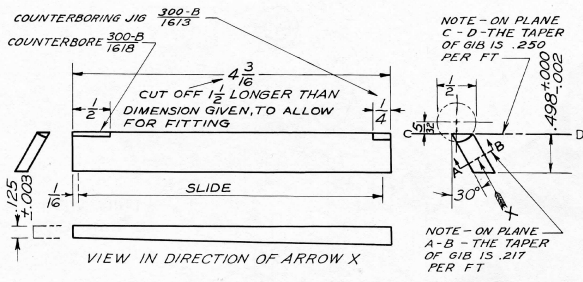


TO MATCH BODY

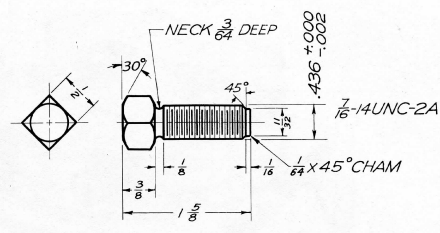
I-NUT 219-9
NO. 10 BRONZE

- DRILL JIG 300-B 1610
- TAPPING FIX 300-B 1671
- SPECIAL TAP 300-B 1612

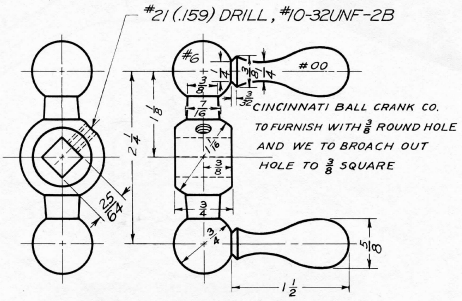
Fig. 14-102 Slide Tool (Continued). See Fig. 14-101 for instructions.



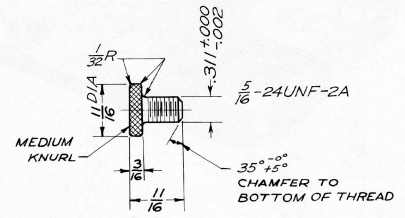
1-GIB 219-1001
SAE 1020 STEEL - $\frac{3}{8}$ X 1 BAR



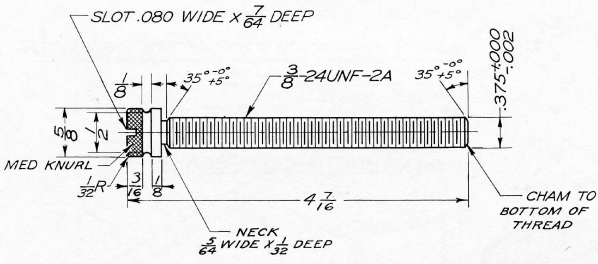
2-TOOL CLAMP SCREW - 683-F-1002
D-2-STEEL
TREAT - 45Y-Z #00



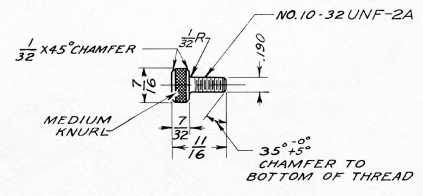
1-COMPOUND REST HANDLE 219-1011



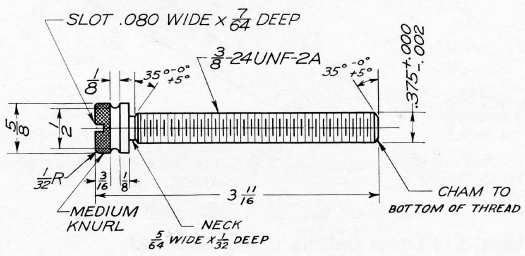
1-BINDER SCREW - 219-1017
SAE X-1315 STEEL - COLD FINISHED - $\frac{11}{16}$ BAR
TREAT P55Z



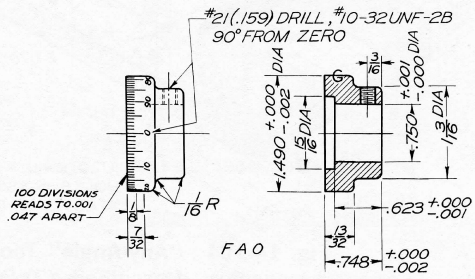
1-STOP SCREW - 219-1013
SAE X-1315 STEEL - COLD FINISHED - $\frac{3}{8}$ BAR
TREAT - P55Z



1-BINDER SCREW - 280-1010
SAE X-1315 STEEL - COLD FINISHED - $\frac{7}{16}$ BAR
TREAT P55Z



1-STOP SCREW - 219-1012
SAE X-1315 STEEL - COLD FINISHED - $\frac{5}{8}$ BAR
TREAT - P55Z



1-DIAL 219-1018
A-1-STEEL $\frac{1}{4}$ BAR

Fig. 14-103 Slide Tool (Continued). See Fig. 14-101 for instructions.