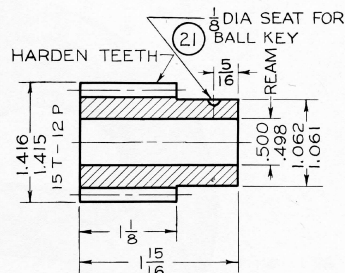
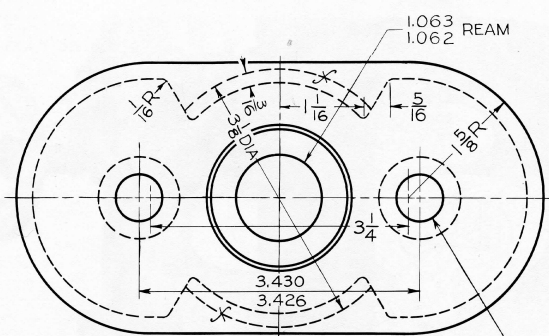
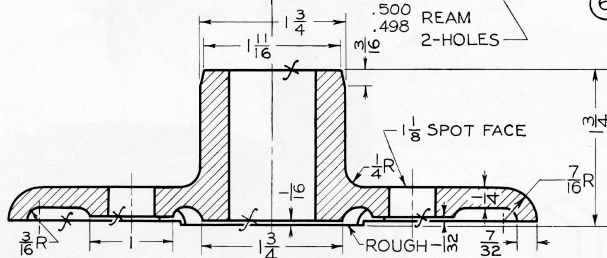


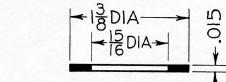
Fig. 14-90 Drill Speeder. (See Figs. 14-91 and 14-92.)



⑥ INTERMEDIATE PINION
AJAX STL-2 REQD

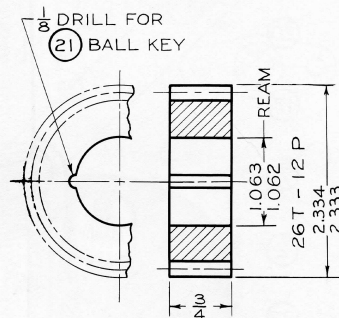
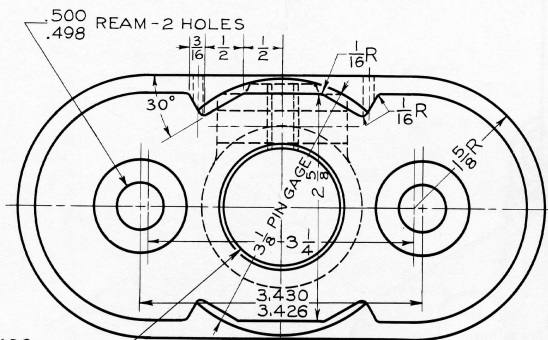


① BODY-UPPER HALF
CI - 1 REQD

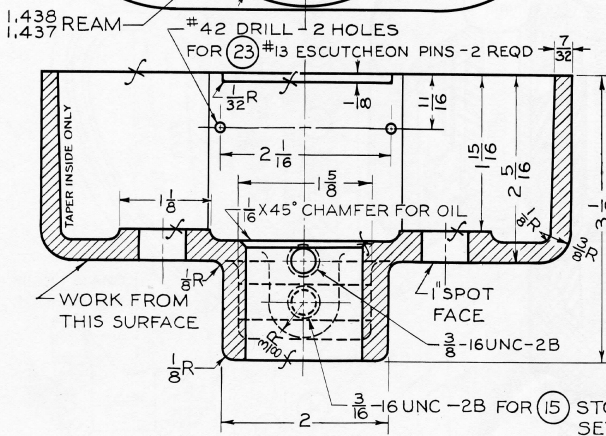


⑬ SPINDLE WASHER
CRS - 1 REQD

⑰ THRUST BEARING
1.344 OD x .625 ID x .562
STK - 1 REQD



⑤ INTERMEDIATE GEAR
PAT. #337-C 1-2 REQD



② BODY-LOWER HALF
PAT. # 336 - CI-1 REQD

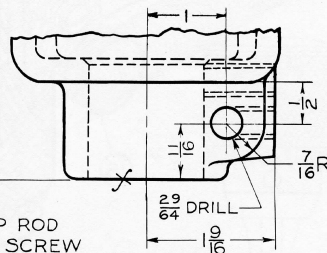


Fig. 14-91 Drill Speeder (Continued). (1) Draw details. (2) Draw assembly.
(See Fig. 14-90.) If assigned, convert dimensions to decimal system.

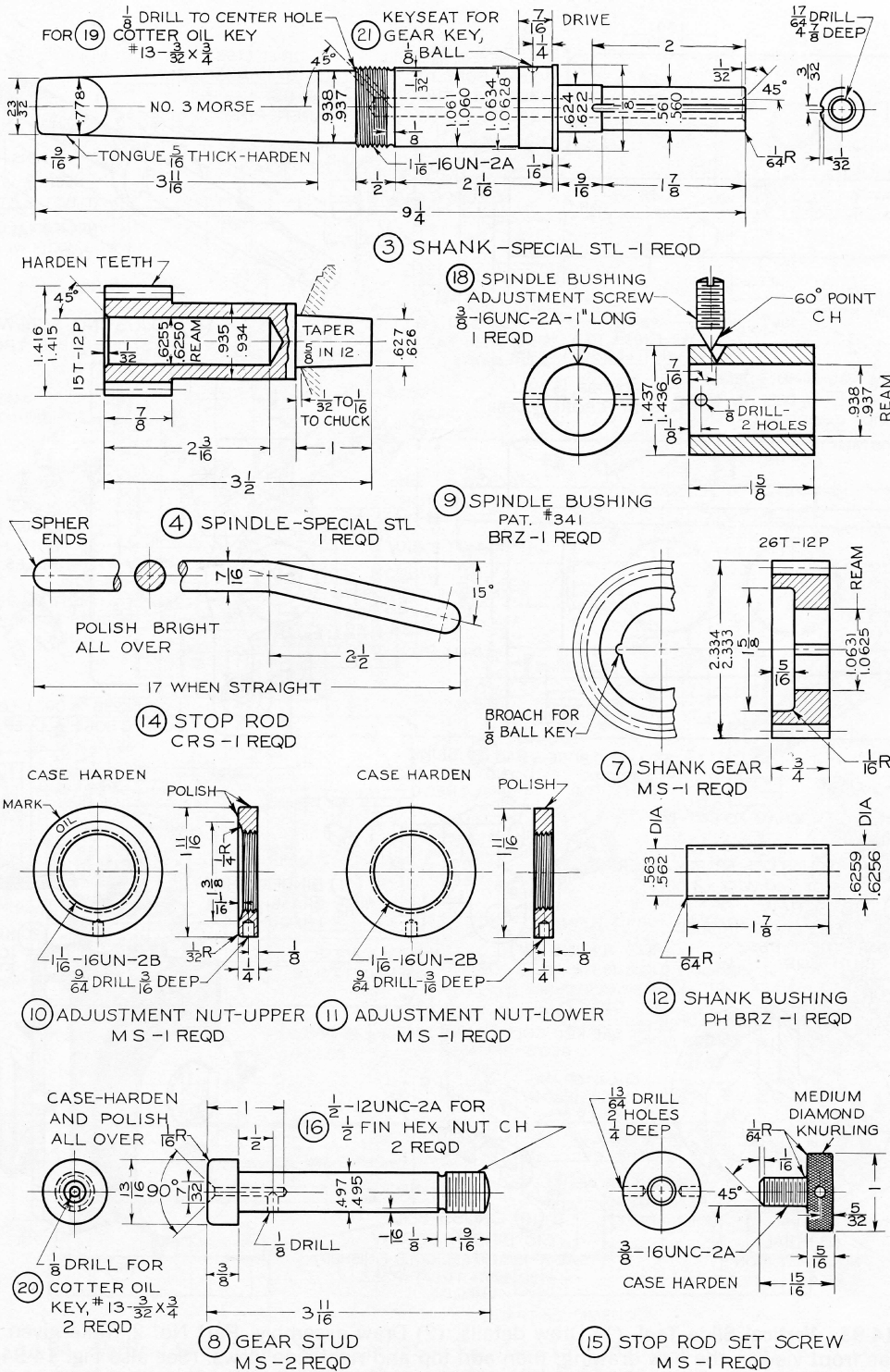


Fig. 14-92 Drill Speeder (Continued). See Fig. 14-91 for instructions.