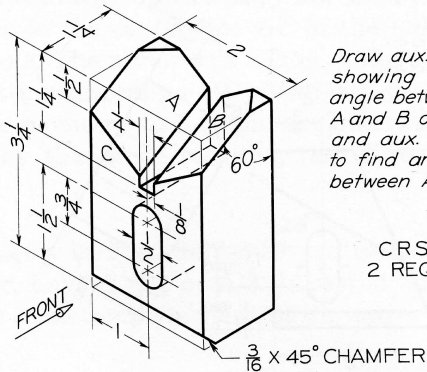


Fig. 8-30 Anchor Bracket. Draw necessary views or partial views (Layout A-3).



Draw aux. view showing true angle between A and B of 120° ; and aux. view to find angle between A and C.

CRS
2 REQD

Fig. 8-31 Centering Block. Draw complete front, top, and right-side views, plus indicated auxiliary views (Layout B-3).

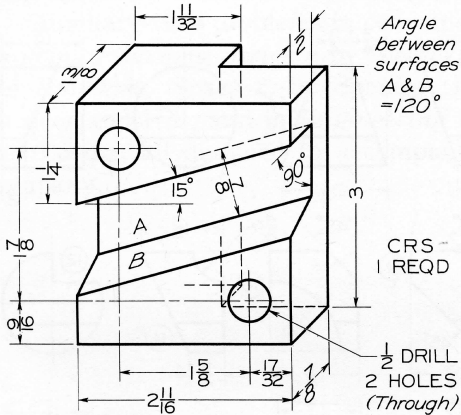


Fig. 8-32 Clamp Slide. Draw necessary views completely (Layout B-3).

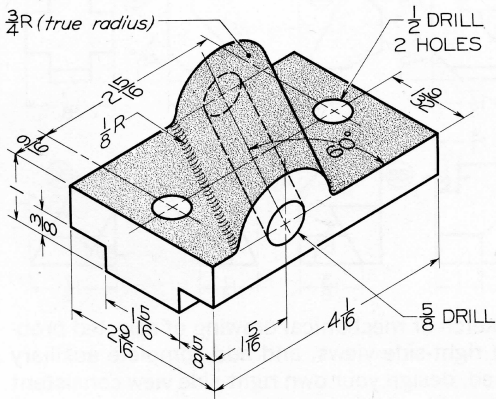


Fig. 8-34 Angle Bearing. Draw necessary views, including a complete auxiliary view (Layout A-3).

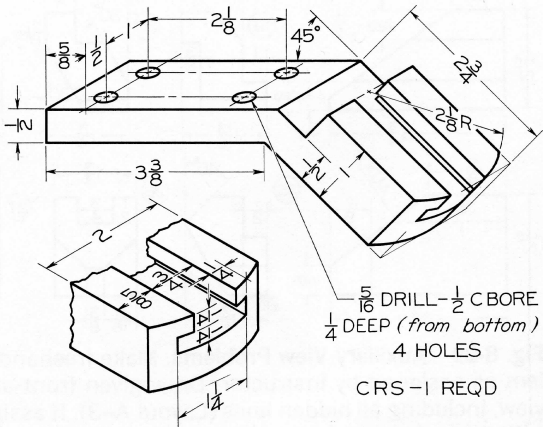


Fig. 8-35 Guide Bracket. Draw necessary views or partial views (Layout B-3).