

Fig. 6-90 Vise Base (Layout B-3).*

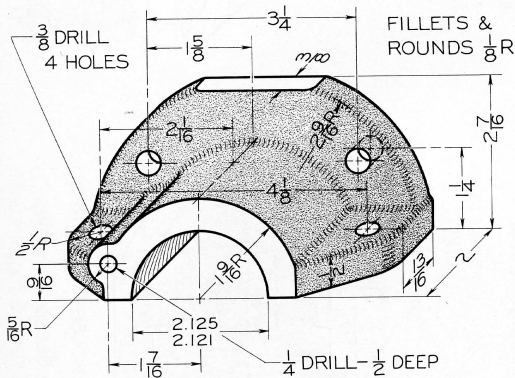


Fig. 6-91 Dust Cap (Layout B-3).*

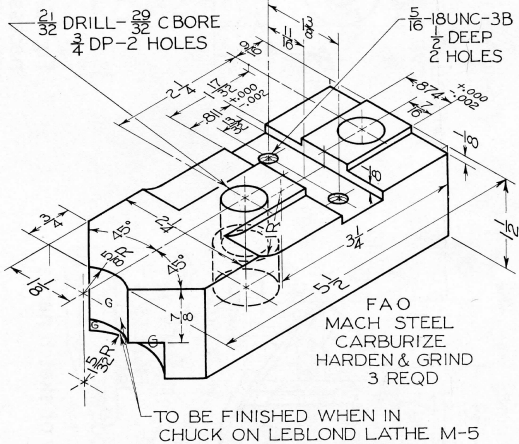
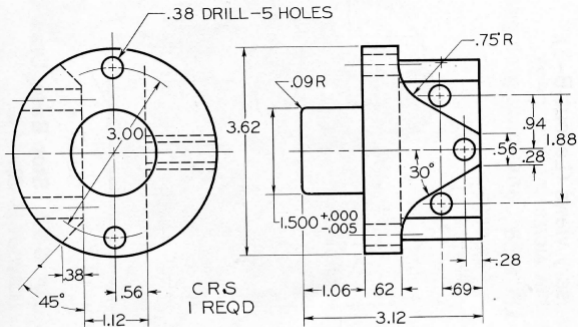


Fig. 6-92 Chuck Jaw (Layout B-3).*
 For threads, see §§13.15 and 13.16.



Given: Front and L Side views.
 Req'd: Front, R Side, and Top views.

Fig. 6-93 Holder (Layout B-3).*

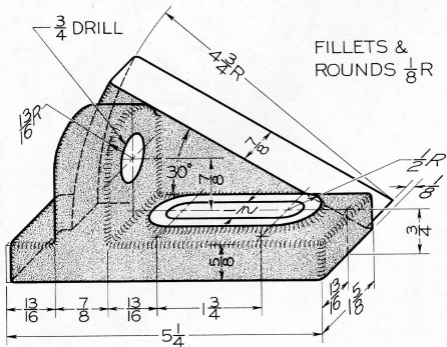


Fig. 6-94 Centering Wedge (Layout B-3).*