

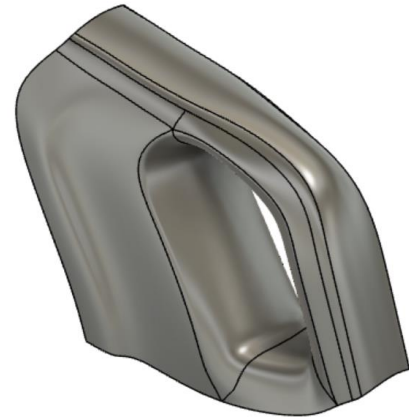
Practice exercise: Freeform modeling

Exercise duration: ~15 minutes

Edit a Form body.

Learning objectives:

- Edit an existing Form body.
- Use Insert Point.
- Use Crease/Uncrease.
- Use Insert Edge.



The completed exercise

1. Open the supplied dataset *crease.f3d*.

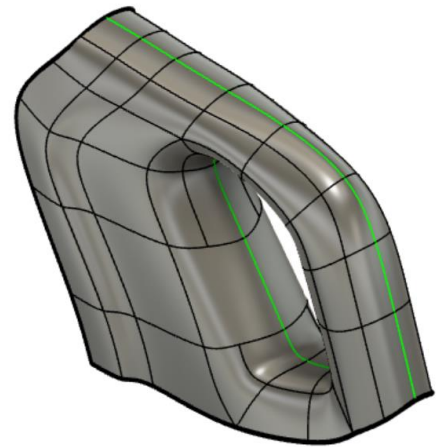


Figure 1. Uploaded design.

2. With the Form toolset open, select Modify > Insert Point. Insert the two points pictured in Figure 2. Click OK to confirm.

NOTE: The tool may prompt with a request for a T-Spline Surface Version Upgrade which can be accepted by clicking OK.

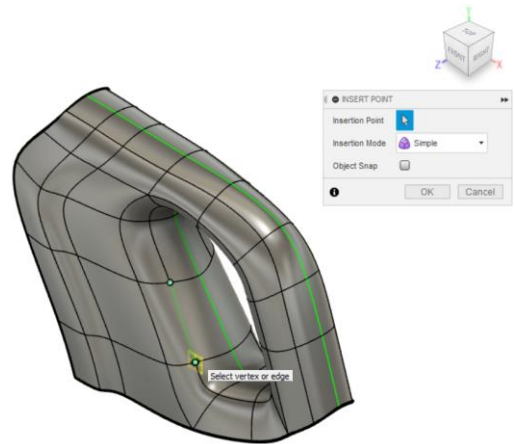


Figure 2. Insert points on the Form body

3. Use Modify > Crease to crease the pictured chain of edges. Click OK to confirm the operation.

NOTE: Recognized chains can automatically be selected by double-clicking an edge in the chain. To add additional edges, hold SHIFT.

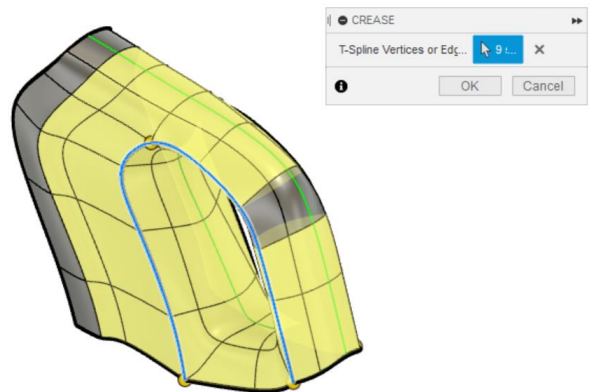


Figure 3. Crease a chain of edges

4. Use Modify > Insert Edge to insert an edge close to the chain of edges selected in Figure 4.

NOTE: Insert Location in this example was set to 0.25

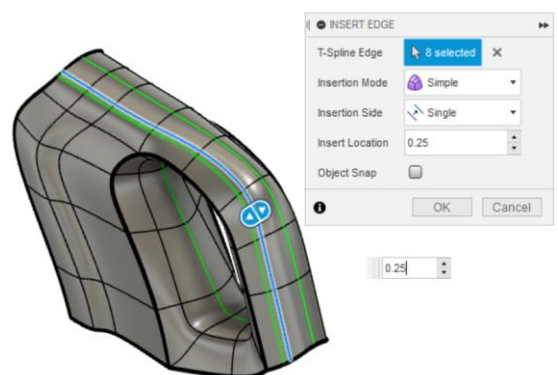


Figure 4. Insert an edge

5. As Form tools do not have design history, explore an approach to revert changes by using Modify > Uncrease to remove the crease applied in Figure 3.

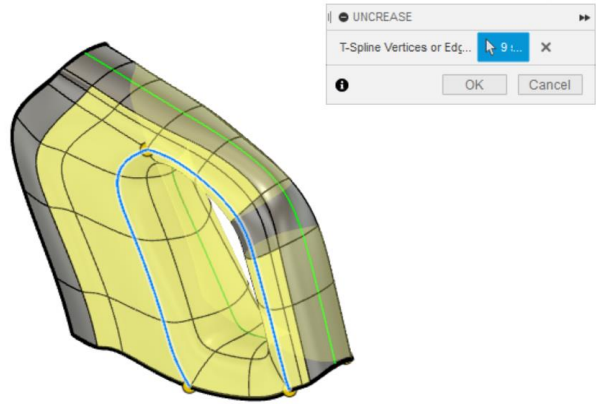


Figure 5. Use Uncrease to revert an operation

6. Use Modify > Insert Edge to add a new chain to approximately match the output shown in Figure 6.

NOTE: The display mode of the Form body can be toggled between Box, Control Frame, and Smooth displays using ALT + 1, 2, or 3 respectively. Alternatively, the Utilities > Display Mode menu can be used.

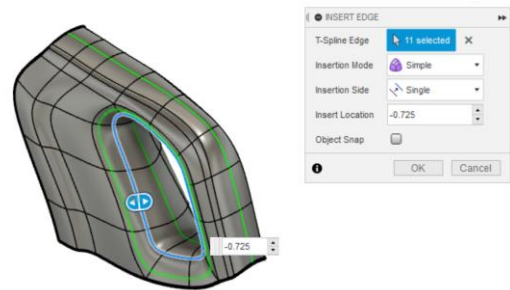


Figure 6. Create a rough sketch

7. Use Modify > Edit Form to narrow the grip region of the Form body. Consider moving vertices and edges to achieve the desired shape.

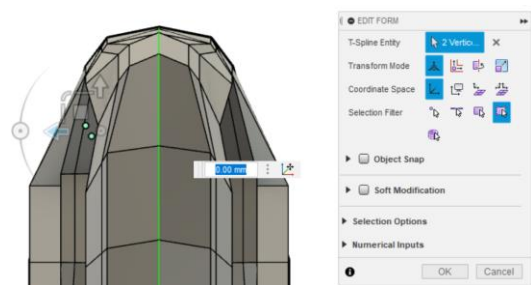


Figure 7. Use Edit Form

8. Using Utilities > Convert, convert the Form body into a surface body. Select the entire Form body for the Selection field and choose a few defining edges for the Keep Edges field. These edges will be preserved during the conversion. Click OK to confirm.

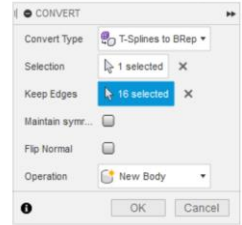
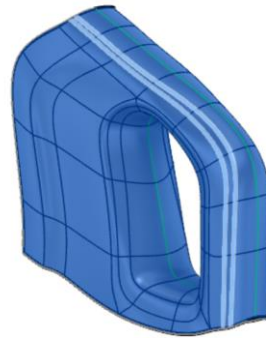


Figure 8. Use the Convert utility

9. Verify that the original Form body and the newly converted surface body are in the Browser.

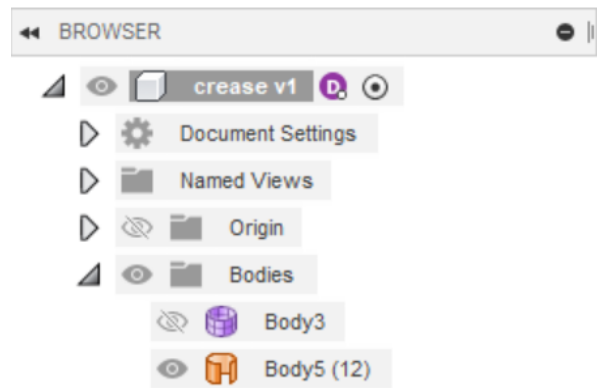


Figure 9. Review the Browser

10. Save the design.



Figure 10. Save